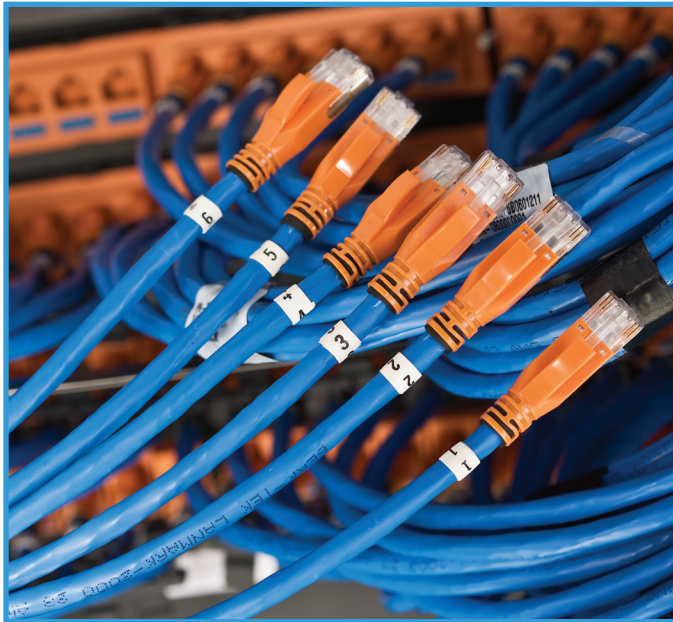


► COPPER CONNECTIVITY

SNAP™

Pre-Terminated Copper Cabling System



Quick and reliable data center installations are a SNAP with the latest innovation from Legrand | Ortronics!

In today's workplace, where network downtime is costly and detrimental to any business or organization, bringing a new data center online must be completed as quickly as possible. Quick and easy installations that guarantee reliable performance are more critical than ever.

Clarity® SNAP Pre-Terminated Copper Cabling System offers the above-the-standards performance of Clarity connectivity in a custom terminated cable assembly system that's ready to plug and go. Its innovative modular design combines high performance and installer friendly features with the quick deployment and reliability of a factory terminated and tested cabling system.

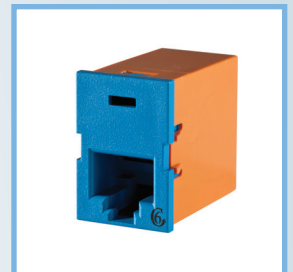
Cable
Assemblies



Patch Panels



Workstation
Modules



FEATURED
PRODUCTS

SNAP™ PRE-TERMINATED COPPER CABLING SYSTEM

The SNAP connection utilizes a bifurcated termination method, placing one mating half of the termination onto the horizontal cable and the other on the 8-position T568 jack interface. This approach reduces the size of the terminated cable ends, making it easier to pull and lace cables through racks, cabinets, cable management systems, and pathways. In addition, individual cable ends of bundled cables can be passed through one at a time, as compared to some alternative designs where the connections are bundled into modules and must be pulled through pathways and openings that way.

As a result, SNAP cable assemblies route faster, with less interference from connector ends within congested pathways. And, the robust cable ends are ruggedly designed to handle the physical challenges of any installation. When in position, these cable ends simply SNAP into the back of the panel or workstation outlet, completing the termination. It's a SNAP!

The Clarity SNAP system also offers the added assurance of the premium performance of Clarity connectivity. The SNAP bifurcated termination offers improved pair-to-pair isolation and improved pair balance through the connector, while barriers located on the sides of these terminations enhance alien noise performance. The result is improved channel immunity from internal and external noise, which ensures consistently high performance links and channels.

The benefit of these technological advancements is a consistently high performance cabling system that is fast and simple to install and enables quick network deployment, increased reliability, and lower total cost of ownership. Both the electrical design of SNAP and the additional controls and in-process testing only available in a factory environment lead to improved consistency in channel performance, to improve the overall average results that you can expect from your installation.



The Clarity SNAP system has expanded to include port replication

Port replication enables a separate patch panel to act as the administrative cross connect for servers and switches. Factory assembled port replication cable sets and panels provide a quick and easy pretested option.

Port replication is an increasingly popular method of protecting modular jacks in both switches and servers. Repeated use of these modular jacks as an administrative connection to horizontal cabling can cause damage to the jack port. Port replication enables a separate patch panel to act as the administrative cross connect instead of using the switch or server ports directly, minimizing the risk of harm to your active equipment. Should the replicated ports become damaged over time, the replacement cost and network downtime are significantly less than the expense of replacing a switch or server port.

Ortronics® Clarity SNAP Port Replication (PR) raises the bar in performance and speed of installation by utilizing the SNAP system's innovative design to easily integrate factory-terminated cables into a port replication application. SNAP PR cable assemblies use RJ45 terminations on the server/switch side and SNAP cable terminations on the patch panel side to enable the SNAP patch panel as the cross connect.



SNAP™ CABLE ASSEMBLIES

Each Clarity® SNAP cable assembly includes an identification label, which includes part number, performance level, and serialized quality assurance number for future traceability.

OR-PCHXP6B06XXXX



OR-PCH3R6M06XXXX



OR-PCS2P06XXXX



Multiple Cable Harnesses Matrix

Choose your cable type, number of cables, color, length and leg style using the blue shaded code.

Note: Contact sales for leadtimes and mins for other cable colors.

	CABLE TYPE		# OF CABLES		COLOR		LENGTH FEET, (INCLUDES LEGS)	END 1 LEGS		END 2 LEGS	
PCH	10G Plenum	XP	6 spiral-bound bundle	6B	Blue	06	XXX	no stagger w/ protective sock	1	no stagger w/ protective sock	1
	LM2000 Plenum	3P						stagger left w/ protective sock	2	stagger left w/ protective sock	2
	LM2000 Riser	3R						stagger right w/ protective sock	3	stagger right w/ protective sock	3
	LM1000 Plenum	2P	6 in mesh	6M	White	09		no stagger w/ pulling sock	4	no stagger w/ pulling sock	4
	LM1000 Riser	2R						stagger left w/ pulling sock	5	stagger left w/ pulling sock	5
	LM350 Plenum	1P						stagger right w/ pulling sock	6	stagger right w/ pulling sock	6
LM350 Riser	1R										

Example: PCH XP 6B 06 XXX 1 1

Single Cable Assembly Matrix

Choose your cable type, color, length and leg style using the blue shaded code.

Note: Contact sales for leadtimes and mins for other cable colors.

	CABLE TYPE		COLOR		LENGTH FEET, (INCLUDES LEGS)	CABLE NUMBER LABEL	
PCS	10G Plenum	XP	Blue	06	XXX	No label	00
	LM2000 Plenum	3P				#1	01
	LM2000 Riser	3R				#2	02
	LM1000 Plenum	2P	White	09		#3	03
	LM1000 Riser	2R				#99	99
	LM350 Plenum	1P					
LM350 Riser	1R						

Example: PCS XP 06 XXX 01

SNAP™ CABLE ASSEMBLIES

Port-Replication

OR-PRS3P09XXXX



OR-PRH3R6B09XXXX



Multiple Cable Harnesses Matrix

Choose your cable type, number of cables, color, length and leg style using the blue shaded code.

NOTE: More colors are coming soon.

PRH	CABLE TYPE		# OF CABLES	COLOR	LENGTH FEET, (INCLUDES LEGS)	END 1 LEGS RJ45 END		END 2 LEGS SNAP END		
PRH	LM2000 Plenum	3P	6 in a spiral-bound bundle	6B	XXX		no stagger w/ protective sock	1	no stagger w/ protective sock	1
	LM2000 Riser	3R					stagger left w/ protective sock	2	stagger left w/ protective sock	2
	LM1000 Plenum	2P	6 in mesh	6M			stagger right w/ protective sock	3	stagger right w/ protective sock	3
	LM1000 Riser	2R					no stagger w/ pulling sock	4	no stagger w/ pulling sock	4
	LM350 Plenum	1P	stagger left w/ pulling sock	5			stagger left w/ pulling sock	5		
	LM350 Riser	1R	stagger right w/ pulling sock	6			stagger right w/ pulling sock	6		

Example: PRH 3P 6B 06 XXX 1 1

Single Cable Assembly Matrix

Choose your cable type, color, length and leg style using the blue shaded code.

Contact sales for other color requirements and leadtimes.

PRS	CABLE TYPE		COLOR		LENGTH FEET, (INCLUDES LEGS)	CABLE NUMBER LABEL	
PRS	LM2000 Plenum	3P	Blue	06	XXX	No #	00
	LM2000 Riser	3R				#1	01
	LM1000 Plenum	2P	White	09		#2	02
	LM1000 Riser	2R				#3	03
	LM350 Plenum	1P	#99	99			
	LM350 Riser	1R					

Example: PRS 3P 06 XXX 01

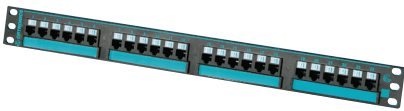
SNAP™ PATCH PANELS

Clarity® SNAP patch panels offer improved rear cable management with the addition of an adjustable depth rear management bar. The rear portion of these bars is also removable to provide more working room for the initial termination of panels. After cables are SNAP terminated, the rear bars are attached and adjusted to the depth that best matches the cable and rack selections.

SNAP panels are also supplied with SNAP-on positioning bend limiters. These plastic cable management aids assist with maintaining proper bend radius of all cables while minimizing the stress on any one cable. This is especially beneficial for cable bundles, as this allows the dissipation of any stress across the entire bundle instead of any one cable termination.

SNAP Panels

OR-PPCF66U24



OR-PPCA66U48



OR-PHDSJU24



OR-PJSN6-36



Flat Panels

PART NO. FLAT 24-PORT	PART NO. FLAT 48-PORT	DESCRIPTION
OR-PPCF610U24	OR-PPCF610U48	Clarity 10G flat panels with 6-port modules
OR-PPCF66U24	OR-PPCF66U48	Clarity 6 flat panels with 6-port modules
OR-PPCF5E6U24	OR-PPCF5E6U48	Clarity 5E flat panels with 6-port modules

Angled Panels

PART NO. ANGLED 24-PORT	PART NO. ANGLED 48-PORT	DESCRIPTION
OR-PPCA610U24	OR-PPCA610U48	Clarity 10G angled panels with 6-port modules
OR-PPCA66U24	OR-PPCA66U48	Clarity 6 angled panels with 6-port modules
OR-PPCA5E6U24	OR-PPCA5E6U48	Clarity 5E angled panels with 6-port modules

Panel Jack Panels without Jacks

PART NO. FLAT 24-PORT	PART NO. FLAT 48-PORT	DESCRIPTION
OR-PHDSJU24	OR-PHASJU24	24-port
OR-PHDSJU48	OR-PHASJU48	48-port

Panel Jacks

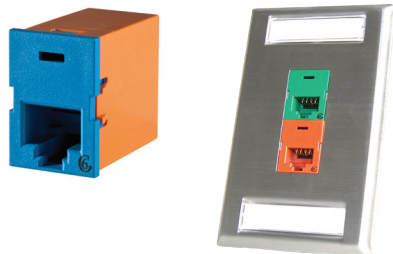
PART NO.	DESCRIPTION
OR-PJSN6A-xx	Clarity 10G
OR-PJSN6-xx	Clarity 6
OR-PJSN5E-xx	Clarity 5E

NOTE: SNAP PJs available colors -00 black, -36 blue, -42 red, -43 orange, -44 yellow, -45 green, -68 gray

SNAP™ WORKSTATION MODULES

SNAP TracJack Workstation Modules

OR-TJSN6



PART NO.	DESCRIPTION
OR-TJSN6A-xx	Clarity 10G
OR-TJSN6-xx	Clarity 6
OR-TJSN5E-xx	Clarity 5E

NOTE: xx = 2 digit color code
 NOTE: SNAP TJs available colors -09 fog white, -36 blue, -42 red, -43 orange, -44 yellow, -45 green, -68 gray

SNAP Inline Coupler

Ortronics® SNAP inline coupler will allow multiple lengths of SNAP cable assemblies to be connected together in a horizontal channel or permanent link.

This product is targeted for use in the open office, flexible workplaces or environments where there is a predisposition that work station layouts will be frequently modified. Factory terminated cabling offers a time saving approach to initial installation and future MAC work.

Supported by PJ panel and TJ plate mounting options

PART NO.	DESCRIPTION
OR-TJSNIC-53	SNAP inline coupler TracJack orange
OR-PJSNIC-53	SNAP inline coupler Panel Jack orange

OR-TJSNIC-53

OR-PJSNIC-53

